

The ProcessVue Suite of software has been developed with the benefit of over 20 years experience with alarm management systems. The architecture has been designed to allow interfacing with virtually any control system, bringing all data into a standard configurable format, for simple Operator Sequence of Event (SOE) display and high level Key Performance Indicators (KPI) reporting and analysis.

Providing clear, relevant and prioritised information to Operators, Supervisors and Managers is critical to decision making whether in the control room or the board room.

ProcessVue Data Collector Overview:

The Data Collector is designed to connect to a multitude of current and legacy control systems. The Collector runs as a Microsoft Windows Service and collects data from the following input types-

- RS232. Specific drivers for Honeywell TDC & Foxboro IA systems including intelligent response for time critical data handshaking.
- TCP/IP & UDP Ethernet protocols.
- File Monitor for Text and CSV files.
- OPC A&E.

Local data storage is achieved through the use of a Microsoft Compact CE database which provides up to 3GB of data storage in the event connectivity is lost to the main Archiver database.

This method of storage allows Collectors to be deployed remotely from the ProcessVue Data Archiver using TCP/IP store and forward technology, or run locally on the same system. This ensures we are always in control of the data flow and never have the potential for data loss.

Additional Features include:

- Full Audit and error log (in-line with 21 CFR 11) recording potential issues and changes in configuration.
- Email client (SMTP & Outlook) capable of alerting users to errors and changes in configuration.
- Up to 32 connections per collector.
- IMAC interface to collect alarms and events from this legacy printer replacement package.

Your Local Distributor :

M.A.C Solutions (UK) Ltd

Units 6-7,
Kingfisher Business Park,
Arthur Street,
Redditch, Worcestershire, B98 8LG

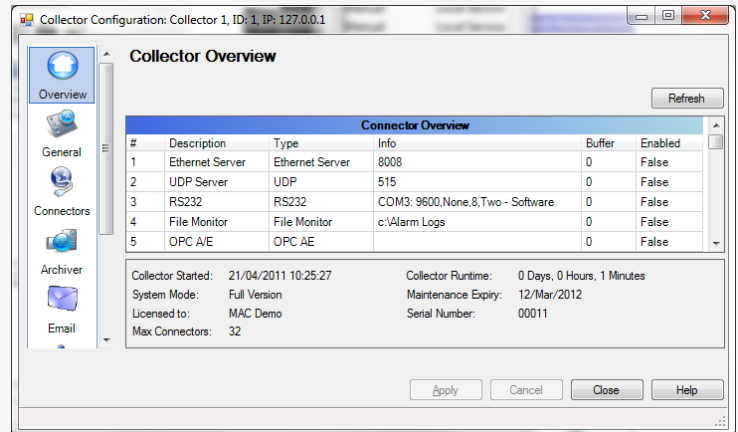
Tel: +44 (0)1527 529774

Fax: +44 (0)1527 838131

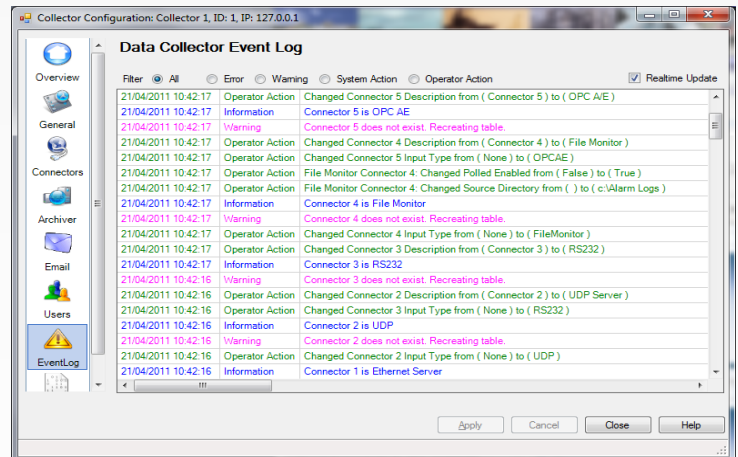
Email: processvue@mac-solutions.co.uk



Overview of configured connections



Audit Event Log



Email Configuration

